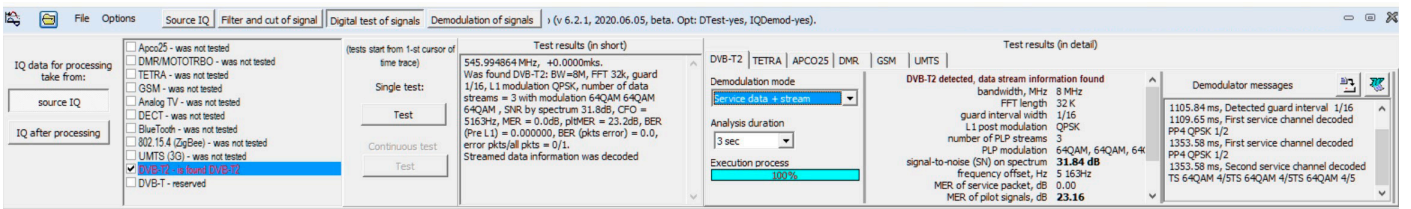
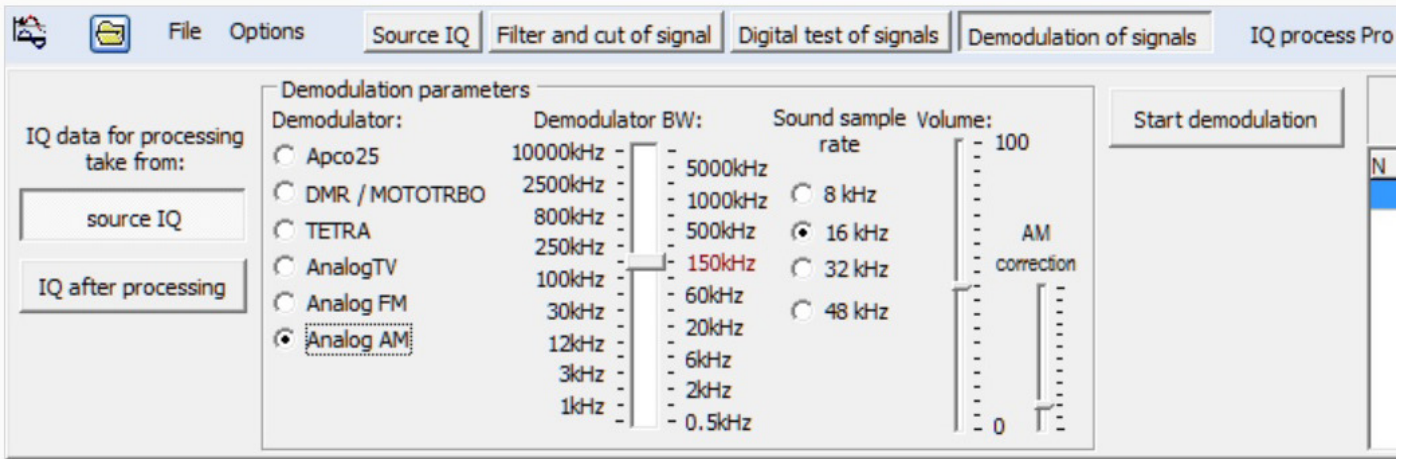


THE IQ_PROCESSPRO PROGRAM IS DESIGNED FOR:

1. Displaying recorded IQ data (IQ, signal amplitude, signal phase)
2. Displaying the spectrum of signals in the recorded IQ data (displaying both the entire record and the specified length, starting from the place specified by the user using the cursor)
3. Digital shift of the initial IQ data to the specified frequency
4. Filtering the original IQ data using predefined filters or a user-defined filter (calculated in the program)
5. Decimation of the original IQ data to the specified sample rate
6. Saving the processed IQ data
7. Digital signal analysis. Analysis of DECT, Bluetooth, 802.15.4 (ZigBee, etc.), GSM (base station topology), UMTS (3G base station topology), AnalogTV, TETRA, DMR, APCO-P25, DVB-T2 standards. Supports all types of demodulators that are included in the DTest option included in the RadiInspectorRT (RC) software packages
8. Demodulation (before receiving speech traffic) of DMR, TETRA, APCO-P25 standards
9. Demodulation of television signals (to obtain a television picture) :
 - analog television of PAL/SECAM/NTSC standards
 - digital TV standards DVB-T/DVB-T2



FUNCTIONALITY OF THE PROGRAM

1. Analyze the initial IQ data in the time and spectral domain
2. Select and save as IQ a separate signal recorded together with other signals when using a wide IQ band
3. To conduct digital signal analysis
4. To carry out demodulation of the signal

